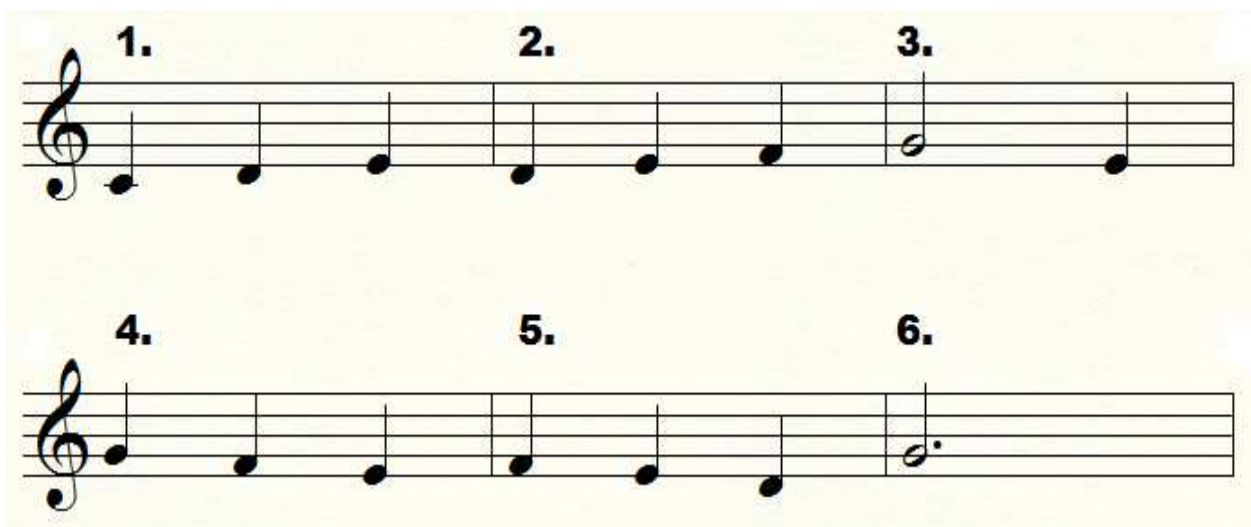


## A Waltz Composition Activity

Items you will need: dice, waltz template staff page, a pencil, and your piano.

To create your waltz:

1. Roll one of the dice and find the corresponding number on the staff below.
2. Copy these notes onto the treble clef line of the first measure on the waltz template page.
3. Repeat steps 1 and 2 until the melody of your waltz is complete.
4. Play your melody on the piano and choose either a I or V7 chord from the key of C major for the bass clef of each measure. Write these chords on the staff in waltz style (bottom note of the chord on beat 1, top two notes of the chord on beats 2 and 3).
5. Create a fun title for your waltz!



# The \_\_\_\_\_ Waltz

Composed by \_\_\_\_\_

Two blank musical staves for measures 1 and 2. The top staff is in treble clef and the bottom staff is in bass clef. Both staves are in 3/4 time signature.

Two blank musical staves for measures 3 and 4. The top staff is in treble clef and the bottom staff is in bass clef. Both staves are in 3/4 time signature. A measure rest '3' is written above the first staff.

Two blank musical staves for measures 5 and 6. The top staff is in treble clef and the bottom staff is in bass clef. Both staves are in 3/4 time signature. A measure rest '5' is written above the first staff.

Two musical staves for measures 7 and 8. The top staff is in treble clef and the bottom staff is in bass clef. Both staves are in 3/4 time signature. A measure rest '7' is written above the first staff. The second measure of each staff contains a dotted half note on the middle line (F4) in the treble clef and a dotted half note on the second space (F3) in the bass clef. A double bar line is at the end of the second measure.

## Once your waltz is complete, have fun trying these ideas!

1. Create a special ending (Coda) for your waltz using notes from the C major chord.
2. Try repeating your waltz, playing the right hand one octave higher.
3. Change the E's to E-flats to make your waltz minor.
4. Transpose your waltz to the key of G major.
5. Use the chords you have chosen and create a new melody using notes from the C major scale.