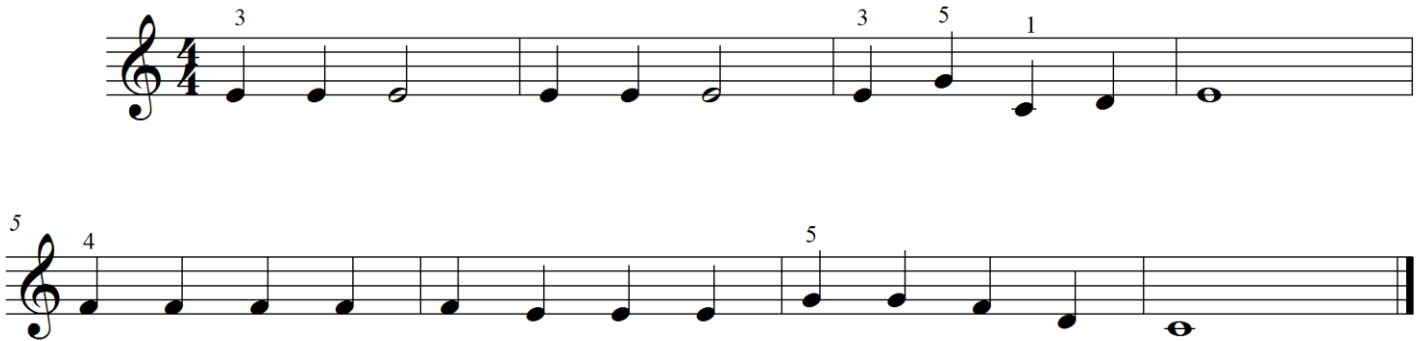




Transposing Challenge # 1:

“Jingle Bells”

The song “Jingle Bells,” composed by James Pierpont, uses the first five notes of the major scale. Here is a section of the melody:



Can you **transpose** “Jingle Bells” to a different major scale? Remember, to build the first five notes of the major scale, follow this pattern:

1st note – Whole step – Whole step – Half step – Whole step

Put a check next to each scale you can use to play “Jingle Bells”!

C major

E major

Ab major

Db major

F major

A major

D major

F# major

Bb major

Eb major

G major

B major