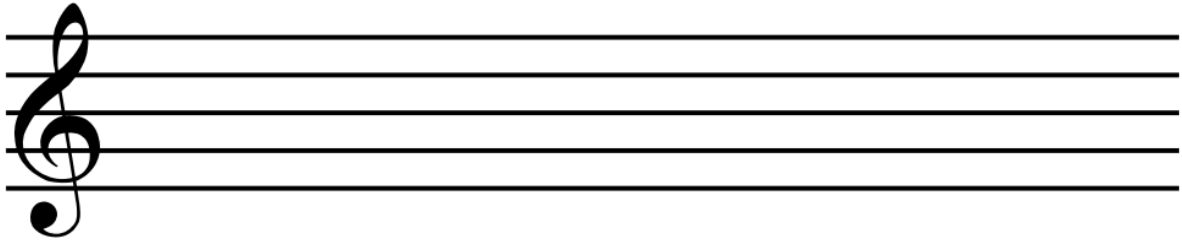


Play by Ear Challenge #1: Steps Only

The first note of each famous song is given. Figure out the remaining notes and write them on the staff. Each melody uses only steps or repeated notes.

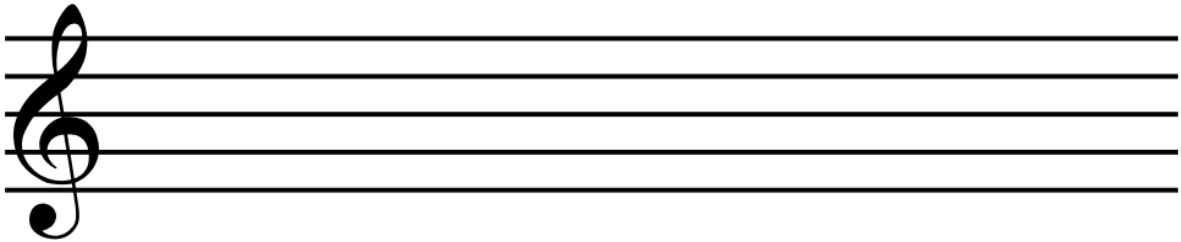
1.



Lon - don bridge is fall - ing down

D ___ ___ ___ ___ ___ ___

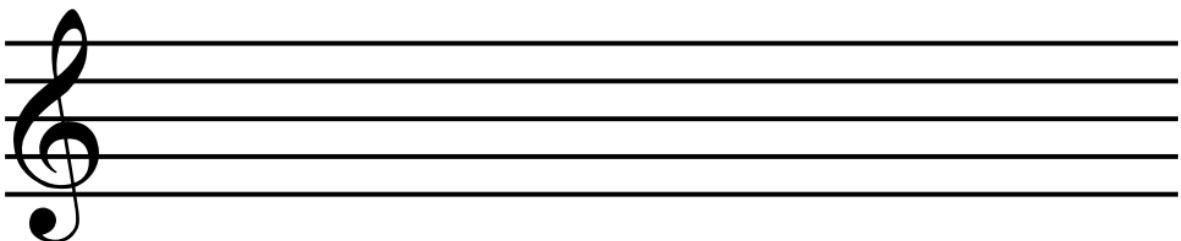
2.



Ma - ry had a lit - tle lamb

E ___ ___ ___ ___ ___ ___

3.



Row, row, row your boat

C ___ ___ ___ ___