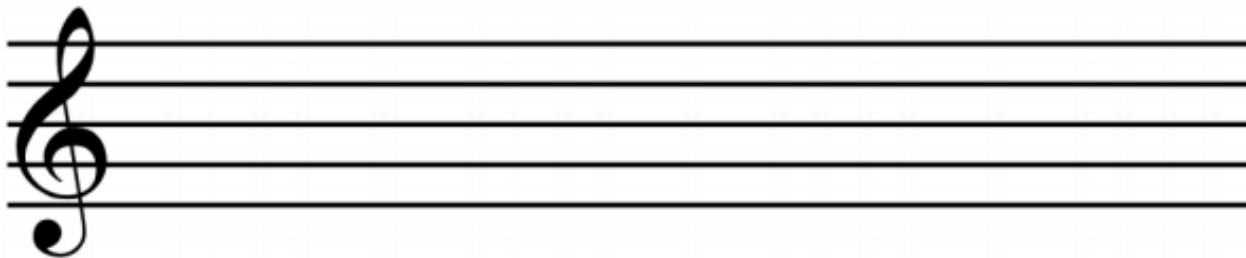


Play-by-Ear Challenge!

Challenge #2: Steps and Skips

Fill in the letter names to complete the familiar melody, then draw each note on the staff.

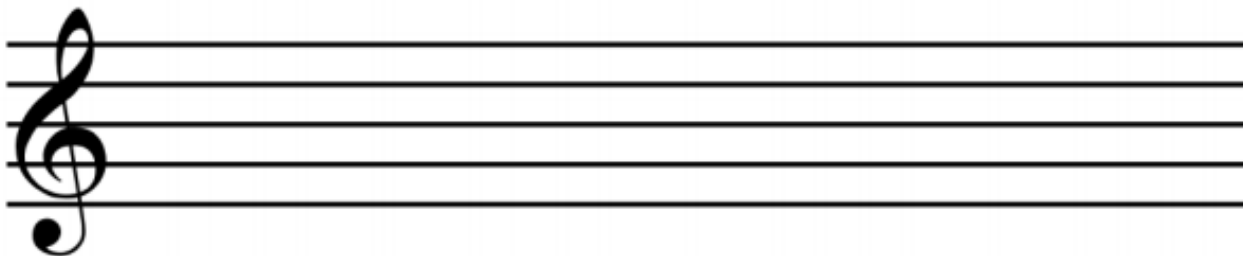
1.



Yan - kee doo - dle went to town

C _ _ _ _ _

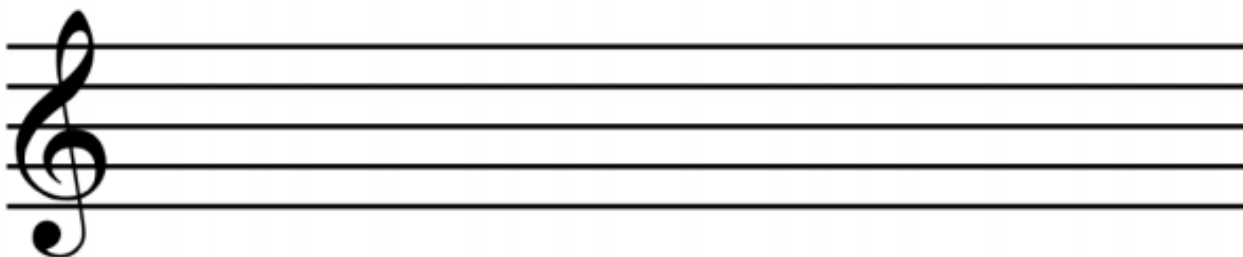
2.



Are you slee - ping, are you slee - ping?

C _ _ _ _ _

3.



Oh when the saints go march - ing in,

C _ _ _ _ _