

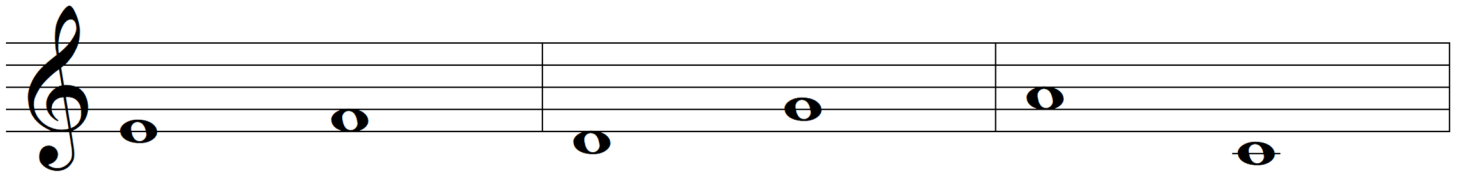


Notation Station

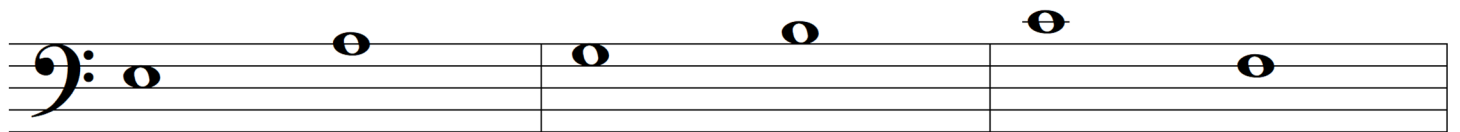
Worksheet #2: Stem direction

All aboard! It's time to practice adding stems to our notes. Follow the directions below to be sure that each stem is drawn correctly. Ready? Let's notate!

1. Add a stem pointing up on the right side of each note in these measures.



2. Add a stem pointing down on the left side of each note in these measures.



3. Add a stem pointing in the correct direction to each note in the measures below. (*Remember, notes below the third line of the staff should have stems pointing up; notes on the third line or higher should have stems pointing down.*)

