



# Notation Station

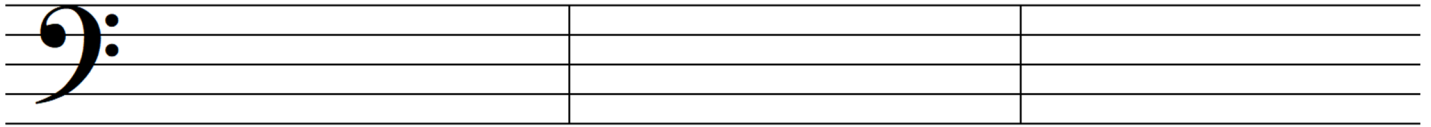
## Worksheet #1: Clefs, line notes, and space notes

All aboard! It's time to practice notating (drawing on the staff) clefs and whole notes. Ready? Let's notate!

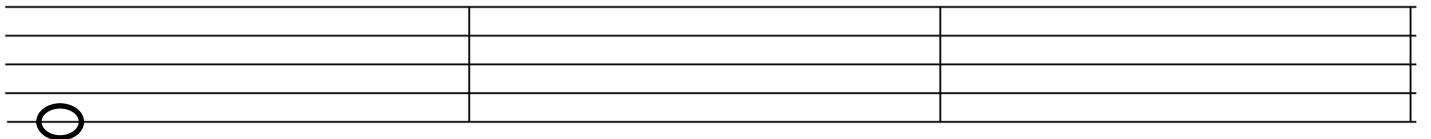
1. Draw another treble clef in each empty measure below.



2. Draw another bass clef in each empty measure below.



3. Draw a whole note on each line in the measures below. The first note has been drawn for you.



4. Draw a whole note on each space in the measures below. The first note has been drawn for you.

