

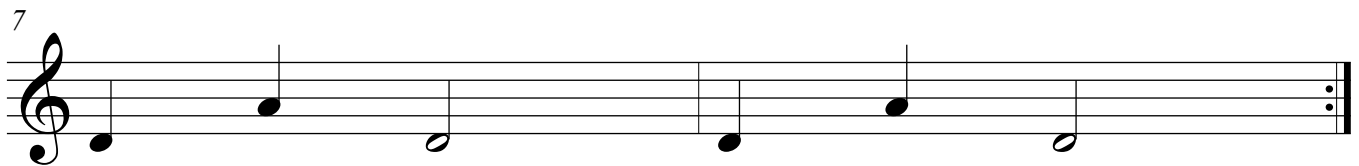
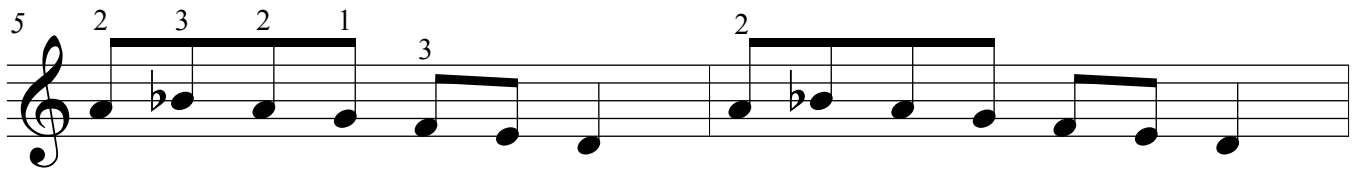
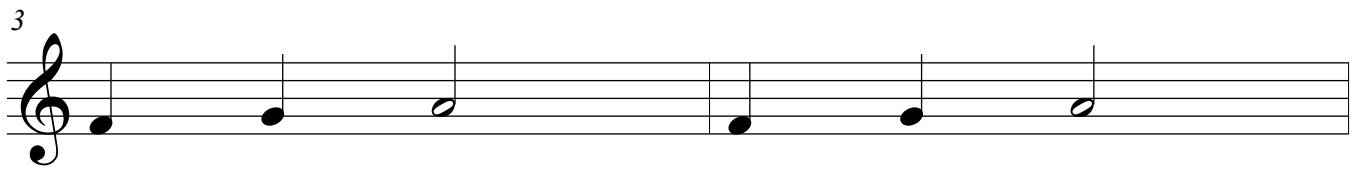
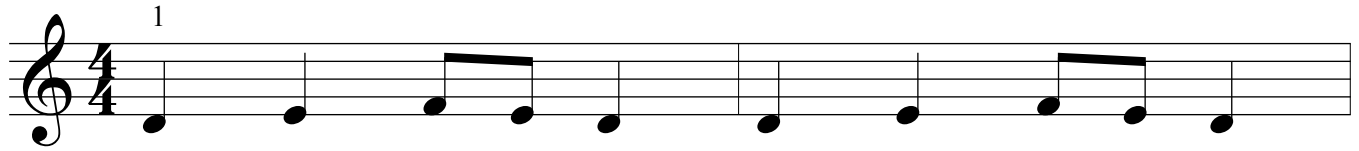
Theme from Symphony No. 1

Movement 3: "Frere Jacques"

Gustav Mahler

Arr. by Chrissy Ricker

Slowly



To play this piece as a round: the first player begins playing at the beginning of the piece, starting high on the piano. When the first player starts the next line of music, the next player joins in, starting from the beginning and playing two octaves lower on the piano. Repeat the process until all players have joined in. You may repeat the piece as many times as you like!