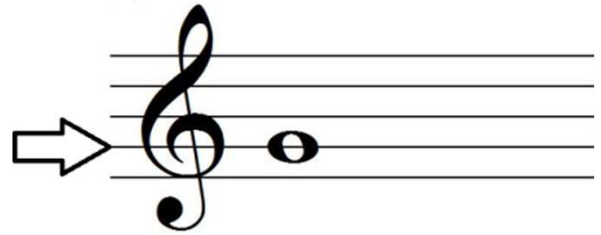


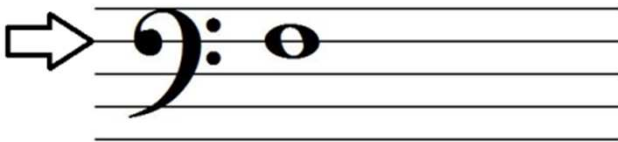
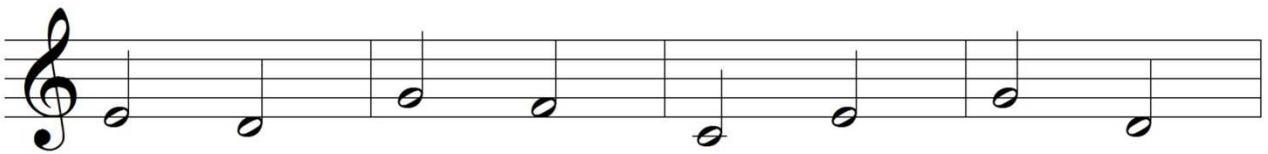
Landmark Notes: Treble G and Bass F

Here comes treble....

The treble clef curls around the G line.



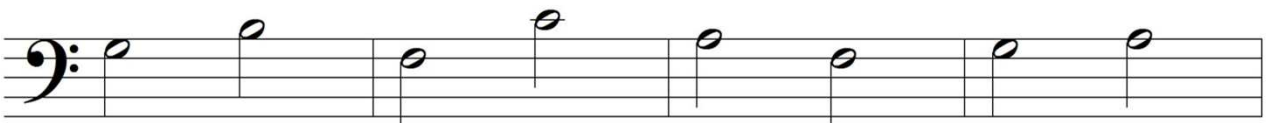
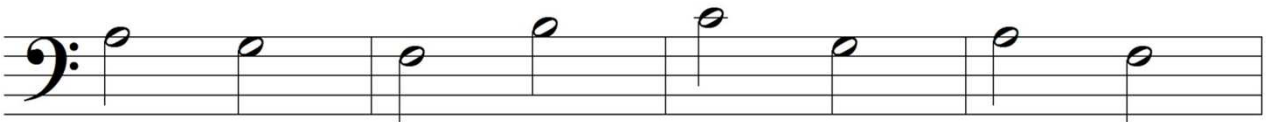
Can you circle all of the G's below?

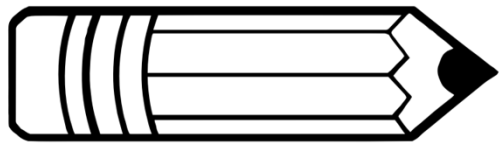


All about that bass....

The big dot of the bass clef is on the F line.

Can you circle all of the F's below?





Drawing Landmark Notes: Treble G and Bass F

Draw a whole note on the G line of the treble clef in each measure.

Draw a whole note on the F line of the bass clef in each measure.

Draw a whole note middle C in each measure.