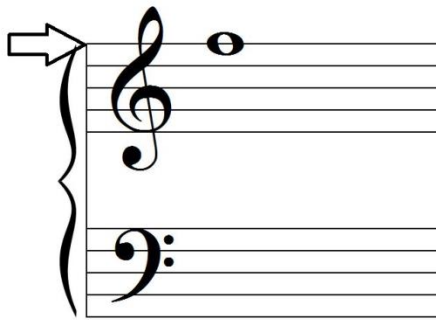
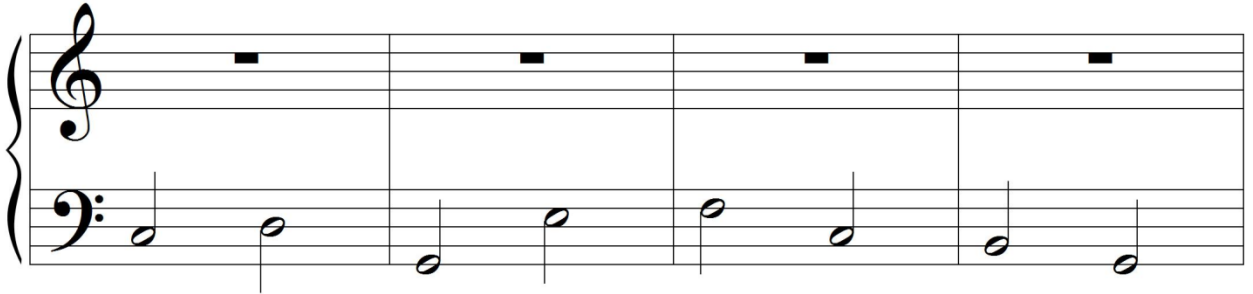
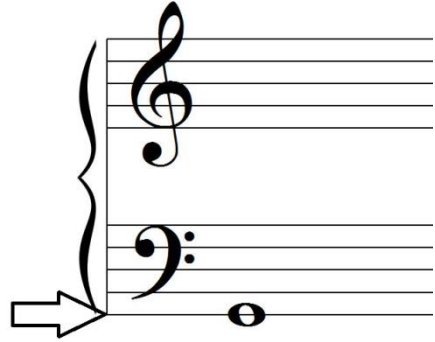


# Landmark Notes: “Ground” G and “Flying” F

*Stay grounded...*

“Ground” G is the very lowest line on the staff.

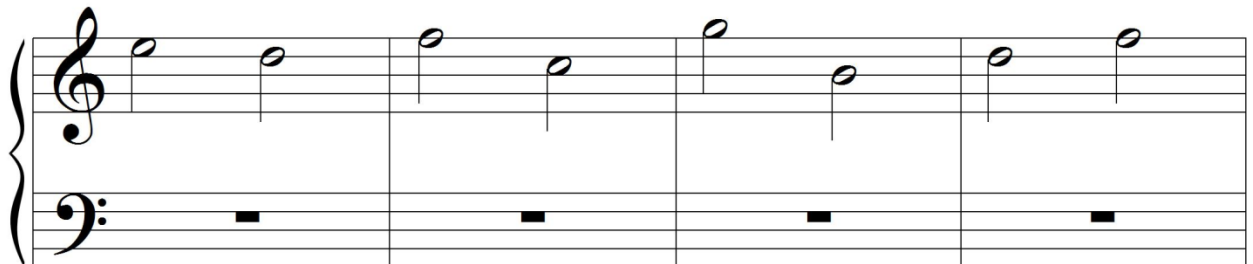
Can you circle the “ground” G’s below?

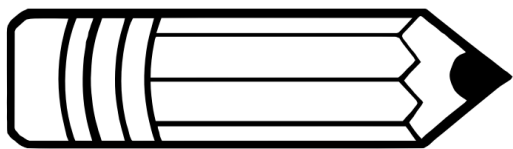


*Flying free...*

“Flying” F is the very highest line on the staff.

Can you circle the “flying” F’s below?





## Drawing Landmark Notes: “Ground” G and “Flying” F

Draw a whole note “ground” G in the bass clef of each measure.

A musical staff consisting of two staves. The top staff has a treble clef and the bottom staff has a bass clef. The staff is divided into four measures, each with five lines. The bottom staff is intended for drawing a whole note G.

Draw a whole note “flying” F in the treble clef of each measure.

A musical staff consisting of two staves. The top staff has a treble clef and the bottom staff has a bass clef. The staff is divided into four measures, each with five lines. The top staff is intended for drawing a whole note F.

Draw all 3 landmark C’s (bass, middle, and treble) in each measure.

A musical staff consisting of two staves. The top staff has a treble clef and the bottom staff has a bass clef. The staff is divided into four measures, each with five lines. The top staff is intended for drawing a whole note C, and the bottom staff is intended for drawing a whole note C.