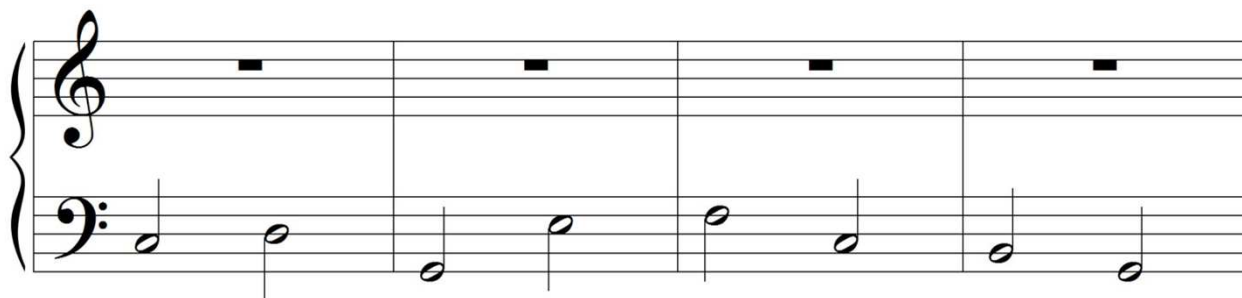
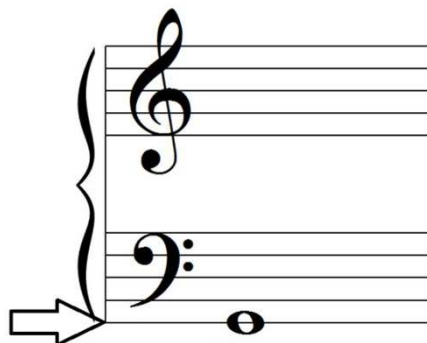


# Landmark Notes: “Ground” G and “Floating” F

*Stay grounded...*

“Ground” G is the very lowest line on the staff.

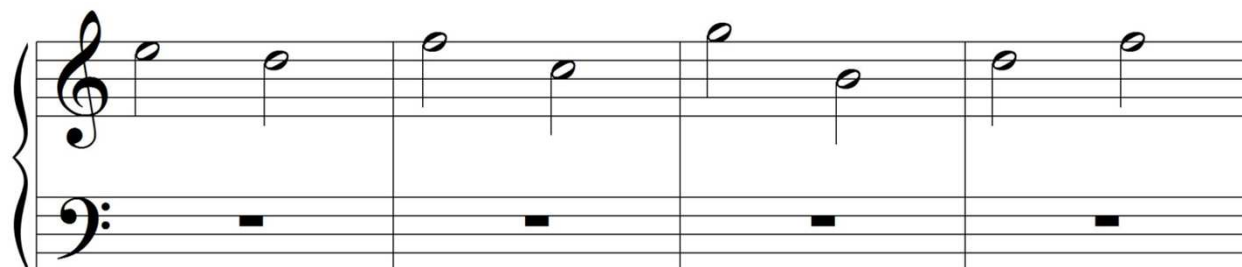
Can you circle the “ground” G’s below?

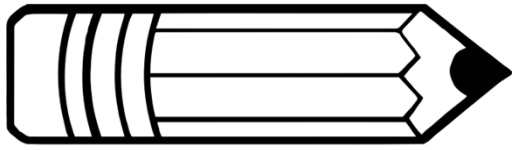


*Floating free...*

“Floating” F is the very highest line on the staff.

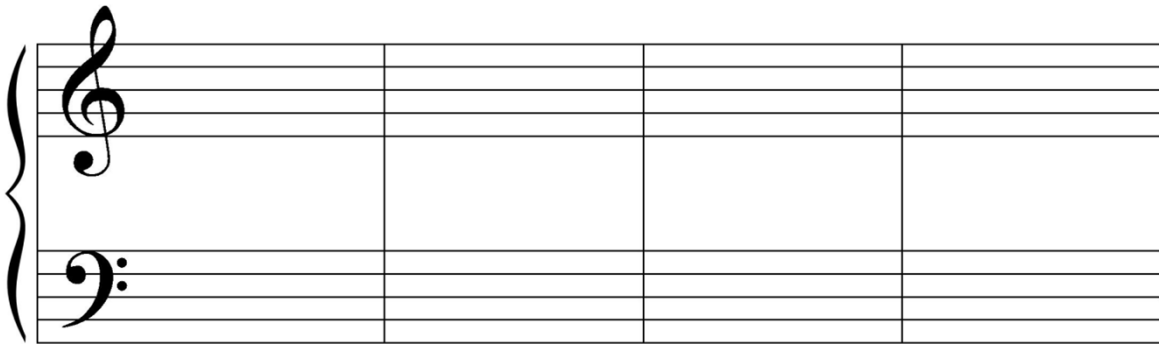
Can you circle the “floating” F’s below?



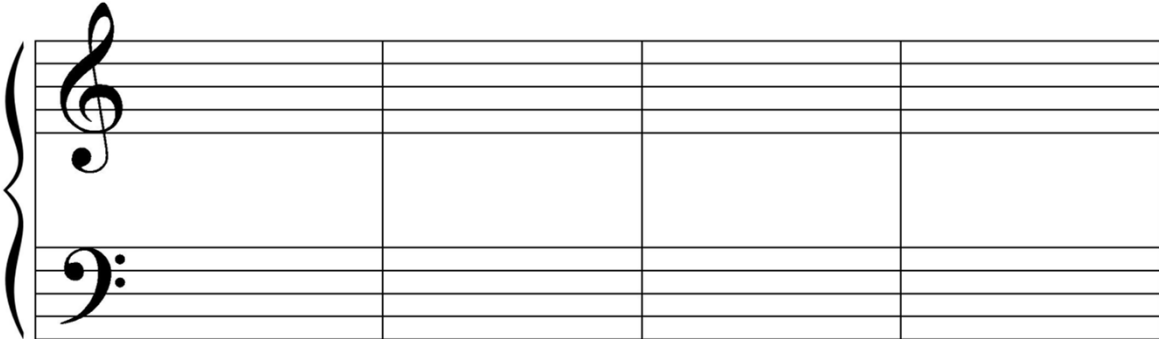


## Drawing Landmark Notes: “Ground” G and “Floating” F

Draw a whole note “ground” G in the bass clef of each measure.



Draw a whole note “floating” F in the treble clef of each measure.



Draw all 3 landmark C’s (bass, middle, and treble) in each measure.

