



# JINGLE BELLS

**A simple ensemble piece for  
elementary piano students,  
arr. by Chrissy Ricker**

This piece may be performed by two or more players, at one or more pianos! Feel free to transpose each part up or down an octave to fit students comfortably at one piano.

For duet version: use Part 2 and Part 3.

For trio version: use Parts 2, 3, and 4.

For quartet version: use all 4 parts.

More than four students? Students may play the rhythm from Parts 1 or 4 on tambourine, jingle bells, or wood block!

# Jingle Bells

## Part 1

Musical score for "Jingle Bells" Part 1, measures 1 through 14. The score is written in 4/4 time and consists of four staves. The melody is played in the right hand, with the left hand providing a simple harmonic accompaniment. The key signature is one flat (B-flat).

Measure 1: Treble clef, 4/4 time signature. The melody starts on G4 (first line, second space). The left hand plays a simple harmonic accompaniment. Fingerings: 3 for the first G, 1 for the first B-flat.

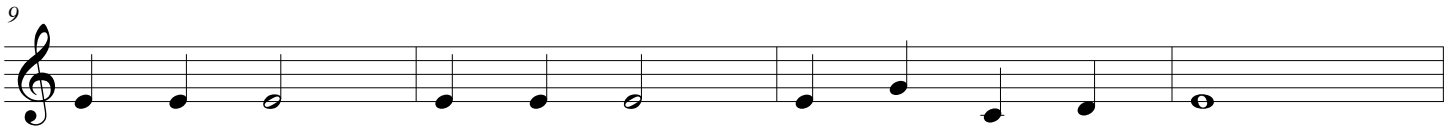
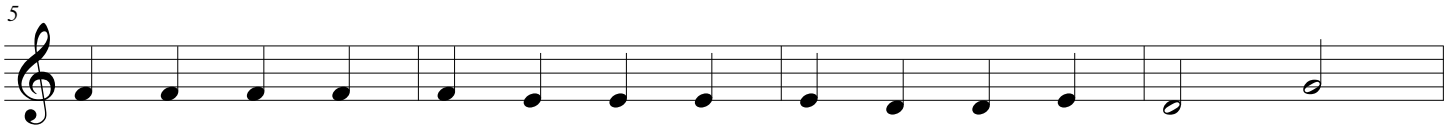
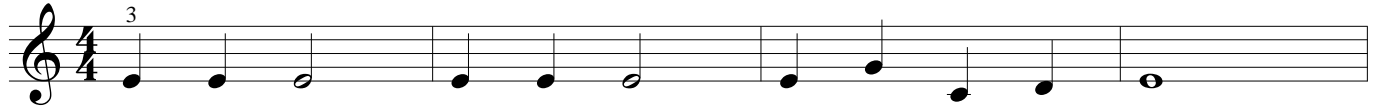
Measure 5: The melody continues. Fingerings: 2 for the first G, 1 for the first B-flat.

Measure 9: The melody continues. Fingerings: 2 for the first G, 1 for the first B-flat.

Measure 13: The melody continues. Fingerings: 2 for the first G, 1 for the first B-flat.

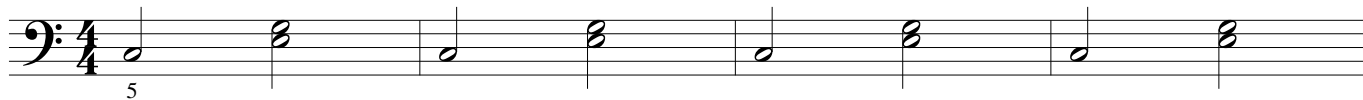
# Jingle Bells

## Part 2



# Jingle Bells

## Part 3



# Jingle Bells

## Part 4

