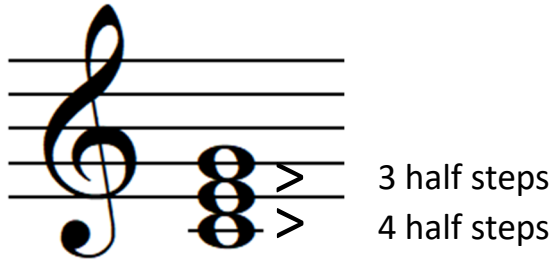
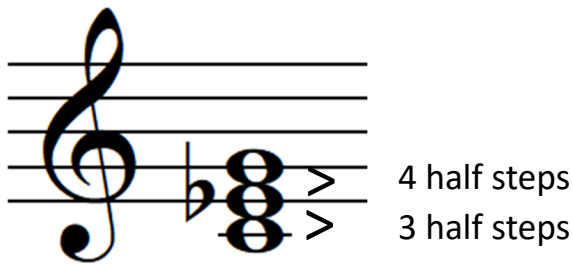


The Chord Building Challenge

A **major chord** in root position has 4 half steps between the bottom two notes and 3 half steps between the top two notes.



A **minor chord** in root position has 3 half steps between the bottom two notes and 4 half steps between the top two notes.



Add the correct notes and accidentals to complete these **major** chords.

D major F major E major G major

Add the correct notes and accidentals to complete these **minor** chords.

A minor B minor Eb minor C# minor