



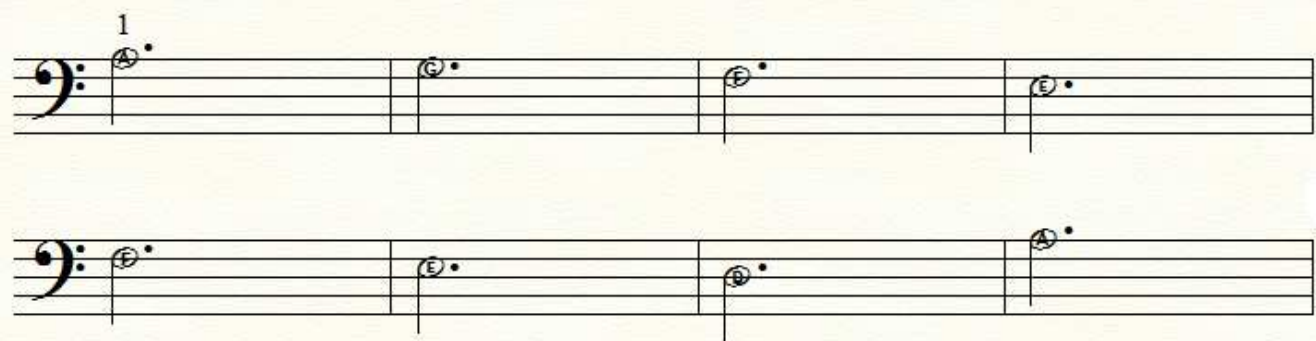
Carol of the Bells

An elementary improv activity

Step 1: Create your introduction! Use this pattern:



Step 2: Create your middle section by adding this left hand harmony to the pattern above:



Step 3: Create your ending by repeating the top pattern, playing each measure in a different octave on the piano! End your improv with a single high or low A.

Some fun tips for your improv:

- ♪ Repeat each pattern as many times as you want!
- ♪ Experiment with creating high and low bell sounds by starting your patterns in different places on the piano.
- ♪ Experiment with dynamics to create loud and soft sounds.
- ♪ Try holding down the damper pedal—how does this change the sound?